



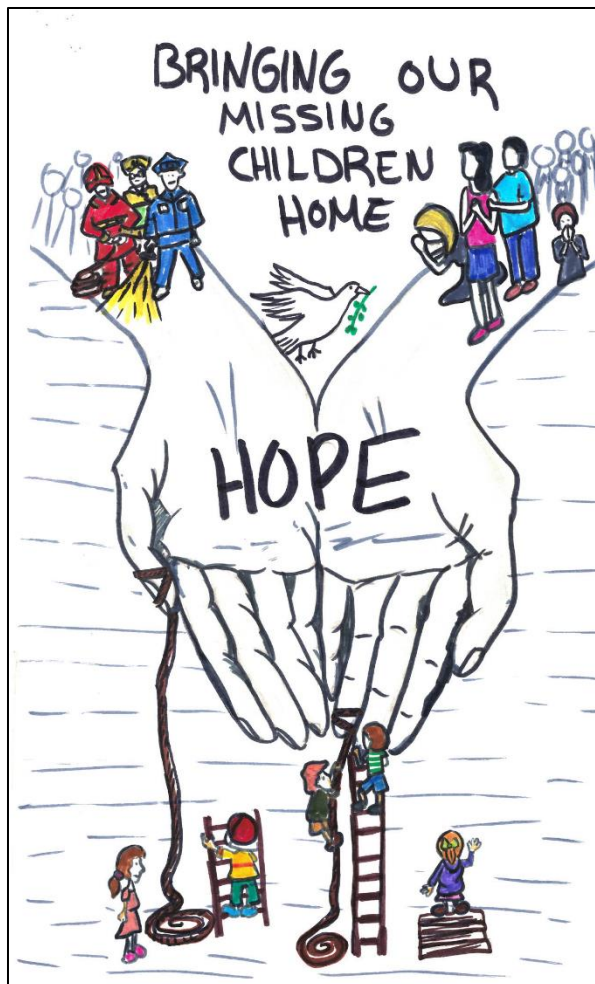
Division of Criminal
Justice Services

Kathy Hochul
Governor

Rossana Rosado
Commissioner

www.criminaljustice.ny.gov

Missing Persons Clearinghouse 2022 Annual Report



New York State Missing Persons Clearinghouse 2022 Annual Report

The New York State Missing Persons Clearinghouse is located within the New York State Division of Criminal Justice Services (DCJS).

The Clearinghouse operates in accordance with New York State Executive Law Sections 837, 837-e, 837-f, 837-f-1 and 838; New York State Codes, Rules and Regulations Part 6055; and New York State Education Law Sections 355, 6206, 6303 and 6450.

This report is submitted as required by Section 837-f-12 of the New York State Executive Law.

On the Cover

Fifth grader Ayoub Alsaidi, created the winning image for the annual New York State Missing Children's Poster Contest, which is organized and coordinated by the Missing Persons Clearinghouse.

New York and other states coordinate their own contests, and the state winners compete against each other in the national contest, helping to raise awareness about missing children's cases across the country. The Missing Persons Clearinghouse coordinates [New York's competition](#). National Missing Children's Day has been observed on May 25 since 1983.

Ayoub, who attends [P.S. 251](#) in Brooklyn, chose hope as the theme for his work. The poster shows rescue workers and families alike walking toward hope in search of children who have gone missing. Ayoub also depicted those missing children, who continue to have hope about reuniting with their families.

Ten-year-old Ayoub's drawing was entered into the [National Missing Children's Day Poster Contest](#), an annual competition sponsored by the U.S. Department of Justice (DOJ) and was selected as the winner of the national competition.

The New York State contest judges also selected second- and third-place winners for the state competition: Travis Slattery, from [Christian Brothers Academy](#) in Albany, and Bailey Trust, from [P.S. 56 The Harry Eichler School](#) in Richmond Hill, Queens.

Table of Contents

Data Overview	1
Missing Children.....	1
Missing Vulnerable Adults	2
Clearinghouse Services	3
Investigative Support.....	3
2022 Investigative Law Enforcement Training Events.....	4
Overview of 2022 Activities	5
Alert Programs	5
Alert and Non-Alert Distribution Mechanisms	6
Alert Activations.....	7
2022 Missing Child Alert Activation Details	8
2022 Missing Vulnerable Adult Alert Activation Details.....	9
Missing Person Clearinghouse Activity and Data	10
New York State Missing and Exploited Children Clearinghouse Fund	10
Annual Reporting Volume for Missing Children: 2013–2022	11
2022 Characteristics of Cases Entered for Missing Children	12
2022 Characteristics of Cases Closed for Missing Children	13
2022 Days between Case Entry and Cancellation for Missing Children	14
2022 Reporting Rate and Volume by County for Missing Children	15
2022 Number of Entries per Child	17
2022 Reporting Volume by County for Missing Vulnerable Adults.....	18
2022 Days between Case Entry and Cancellation for Missing Vulnerable Adult Cases.....	20
2022 Number of Entries per Adult	21

Data Overview

Missing Children

- The number of missing child reports in New York State increased 15.7 percent in 2022, for a total of 11,784. The increase was the result of additional cases reported by law enforcement in both New York City (+12.2%) and Non-New York City (+17.7%).
- The number of missing child reports entered by police as runaways (11,065) accounted for 93.9 percent of disappearances among children under 18 years old.
- There were two stranger abductions reported in 2022, the same as in 2021.
- There were six acquaintance abductions in 2022, compared to seven reported in 2021.
- There were 40 familial abduction cases in 2022, the same as in 2021, and 21 reports of children abducted by a non-custodial parent in 2022, compared to 19 in 2021.
- A total of 11,842 cases involving missing children from 2022 and prior years were closed in 2022 with 1,378 cases active at the end of the year.
- In 59.5 percent of cases closed during 2022, the child voluntarily returned home. Law enforcement assisted with the return of children in 39.1 percent of cases, and a total of eight children who had been reported missing in Erie, New York City, Orange, Suffolk, and Westchester Counties were found deceased.
- All New York State counties except Hamilton and Lewis reported at least one missing child.
- NYC reported an increase in the number of new cases.
- Seventeen counties outside of New York City reported decreases in the number of new cases, while 40 other counties outside of New York City reported the same volume or higher.
- Reports of missing children were concentrated in the state's largest urban areas. Excluding New York City, Westchester County reported the highest volume of cases at 940; Monroe, 888; Erie, 726; Suffolk, 716; and Albany, 634.
- The statewide missing child rate was 2.9 missing children cases per 1,000 children in 2022. Washington and Albany counties had the highest rates of cases reported in the state: 13.7 per 1,000 children and 11.5 per 1,000 children, respectively.
- Children 13 years old or older accounted for 92.2 percent of children reported missing, 57.2 percent were female, and 56.8 percent were non-white. The largest single group of missing children cases involved Black females, ages 13 and older (28.9% of all cases reported).
- The median number of days between the reporting and cancellation of a case on the Register was three days, compared to four in 2021.

Missing Vulnerable Adults

- A total of 7,324 missing adult reports were entered in New York State in 2022; 2,010 (27.4%) were reported as vulnerable adults. The number of missing vulnerable adult reports increased 7.4 percent when compared to 2021 (1,871).
- The largest number of missing vulnerable adult cases (215) were reported in August, and the fewest (124) were reported in February.
- Reports outside of New York City accounted for 63.8 percent of missing vulnerable adult reports. A total of 1,280 cases were reported in the 57 counties outside of New York City, compared to 720 missing vulnerable adult cases in New York City.
- Excluding New York City, Nassau County had the highest number of missing vulnerable adult cases reported (223) followed by Westchester County (140), Erie County (97), Monroe County (78) and Suffolk County (61).
- More vulnerable adults between the ages of 70 and 79 were reported missing than any other age category (20.8% or 419 of 2,010), similar to 2021, when more vulnerable adults between the ages of 70 and 79 were reported missing than any other age category (21.2% or 397 of 1,871).
- Men accounted for 62.5 percent of missing vulnerable adults, and 55.0 percent of missing vulnerable adults were white.

Clearinghouse Services

The Clearinghouse maintains a statewide electronic central registry of missing persons that is compatible with the National Crime Information Center (NCIC) registry for missing persons. Clearinghouse staff also provide investigative support and training to law enforcement, as well as assistance to left-behind family members.

In addition to their work to support law enforcement agencies in New York State, Clearinghouse staff members assist law enforcement agencies and clearinghouses in other states, the National Center for Missing & Exploited Children (NCMEC), not-for-profit organizations and the U.S. Department of State.

The Clearinghouse administers three alert programs that quickly disseminate information to law enforcement, the public and other entities when children under the age of 21, college students, or vulnerable adults with cognitive impairments, are reported missing and are at a credible risk of harm.

The Clearinghouse can be reached 24 hours a day, 365 days a year at: 800-346-3543 or missingpersons@dcjs.ny.gov.

Investigative Support

- As required by law, Clearinghouse staff use this data to flag birth and educational records of missing children, which results in a notification to school and vital records administrators that a child from their school was reported missing. If someone then requests a flagged school or birth record, that information is transmitted to the Clearinghouse and can provide a lead to the missing child's location.
- The Clearinghouse notifies the appropriate law enforcement agency whenever it receives leads about a missing person's case. Staff also develop leads by conducting searches through informational databases and social networking sites.
- The Clearinghouse assists with entering missing and unidentified person information into state and federal databases used for law enforcement investigations. This includes assisting law enforcement agencies and medical examiners with coding and entering dental records and other anatomical information on missing persons.
- Clearinghouse staff prepare and distribute posters of missing children, missing college students and missing vulnerable adults to the public and private sector through the state's NY-ALERT system and through the National Center for Missing & Exploited Children's Lost Child Alert Technology Resource (LOCATER).
 - These tools are utilized by the Clearinghouse to allow for rapid electronic dissemination of photographs, biographical information and case details. Information can be sent electronically to every law enforcement agency, New York State Thruway service areas, as well as bus, train and airport terminals. A public subscription service is used to notify individuals across the state about these cases within minutes.

- The Clearinghouse publicizes missing child, college student and vulnerable adult photographs and biographical information on the DCJS and NCMEC websites, provided that a family member or guardian grants permission. NCMEC only publicizes missing children’s cases.
- Clearinghouse staff provide case management advice to investigating law enforcement agencies, including assessment of case details and assistance with obtaining urgent services.
- The Clearinghouse collaborates with NCMEC and other state clearinghouses, participating in a network that can directly provide nationwide and international assistance to law enforcement agencies and family members.
- The Clearinghouse assists the U.S. Department of State to locate and return internationally abducted children to their country of origin, in accordance with the Hague Treaty on the Civil Aspects of International Abduction.
- Clearinghouse staff develop and distribute investigative guides and presentation material. Publications and training videos are available to law enforcement officers via a secure, online portal and through training programs for law enforcement officers.
- The Missing Persons Clearinghouse manages a Missing Person Cold Case Review Panel to provide law enforcement agencies with a fresh look at cases that have gone cold. The panel features subject-matter experts with diverse perspectives, knowledge and experience from local, state and federal law enforcement and criminal justice agencies. The Cold Case Review Panel only accepts cases submitted by lead investigating agencies. There is no cost for the review.

2022 Investigative Law Enforcement Training Events

Presentation/Training Programs	Number of Courses/ Presentations	Number of Attendees
In Person	25	720
Webinars	4	3,386
TOTAL	29	4,106

Overview of 2022 Activities

Alert Programs

New York State utilizes four alert programs, and the Clearinghouse administers these programs, with the exception of Amber Alerts.

Alerts are designed to ensure the most rapid and widespread dissemination of information about missing children under the age of 21, missing college students of any age, and missing vulnerable adults with Alzheimer's disease, dementia or other cognitive impairment.

Alerts are issued at the request of law enforcement when certain criteria are met.



AMBER Alerts are activated for abducted children younger than 18 who are believed to be at risk for serious bodily harm or death. They are administered by the New York State Police. For more information: www.amber.ny.gov.



Missing Child Alerts are activated when a child younger than 21 is missing and believed to be in danger due to special circumstances, such as young age of the child, a cognitive impairment, medical condition, or other situation, that place them at serious risk of harm or death.



Missing College Student Alerts are activated when a college student of any age is missing and is deemed to be at credible risk of harm or death.



Missing Vulnerable Adult Alerts are activated when an individual, who is 18 or older and has a cognitive disorder, brain injury or mental disability, is reported missing and is at credible risk of harm. This includes individuals with autism, dementia, or Alzheimer's disease.

Within minutes of an alert activation, information about the person is distributed to police agencies, the media, New York State Thruway Authority signs and plazas, New York State Department of Transportation highway signs, airports, bus terminals, train stations, hospitals and other locations. Details are displayed on highway signs for up to eight hours.

Information is also shared via Facebook (<http://www.facebook.com/NYSDCJS>), Twitter (@NYSDCJS) and online (www.criminaljustice.ny.gov/). NYAlert subscribers are notified immediately. Visit alert.ny.gov or call (888) 697-6972 to subscribe.

Alerts can remain active for up to 72 hours. If the individual remains missing after three days, case details are posted to www.criminaljustice.ny.gov/missing.

Alert and Non-Alert Distribution Mechanisms

Method of Distribution	AMBER Alert	Missing Child, College Student, Vulnerable Adult Alert	Missing Child, College Student, Vulnerable Adult Non-Alert
NYS AMBER Alert Website	X		
Wireless Emergency Activation (WEA)	X		
NYS Lottery Terminal Message Boards in Stores	X		
NYS DMV In-Office Electronic Displays	X		
Variable Message Signs: Thruway and Highways	X	X	
NY-ALERT Public Subscriber List	X	X	
NYS Thruway Service Area Televisions	X	X	
Media Outlets – Radio/Television	X	X	
NYC Taxi and Limousine Commission vehicles: For Activations in the New York City Metropolitan Area only.	X	X	
NYS DCJS Website	X	X	X
License Plate Readers	X	X	X
National Center for Missing & Exploited Children (NCMEC) Website (Children Only)	X	X	X
Greyhound/Trailways/Other Bus Terminals	X	X	X
AMTRAK Stations	X	X	X
Airports/Transportation Security Administration	X	X	X
NYS/County Probation Agencies	X	X	X
Hospitals/Clinics	X	X	X
Homeless Shelters	X	X	X
Police Agencies: Local, State and Federal	X	X	X
Canadian Law Enforcement Authorities	X	X	X
NYS/NYC Department of Health/School Records Flagged (Children Only)	X	X	X

Alert Activations

The Clearinghouse administers three alert programs, which are activated at the request of police agencies when a child, college student or vulnerable adult goes missing and certain criteria are met.

Clearinghouse staff activated 177 alerts: 29 missing child alerts were activated for 30 children (two children were the subjects of one alert), and 146 alerts for vulnerable adults. Of the 30 children who were the subjects of a missing child alert, all 30 were found safe and returned home. Of the 146 vulnerable adults who were the subjects of an alert, 142 were found safe and returned home, four were located deceased.

Alert Activations				
Year	AMBER Alert	Missing Child Alert	Missing College Student Alert	Missing Vulnerable Adult Alert
2013	4	7	0	36
2014	10	5	0	75
2015	11	10	2	101
2016	5	20	0	101
2017	7	10	1	116
2018	9	15	1	114
2019	4	28	0	113
2020	6	23	1	117
2021	6	43	0	142
2022	1	29	0	146

2022 Missing Child Alert Activation Details

*29 Missing Child Alerts for 30 children.
Two children were the subjects of one alert.*

Circumstances	
Abduction	2
Autism	8
Child's Age	1
Online Enticement	1
Suicidal	16
Traumatic Brain Injury	1
TOTAL	29

Method of Travel	
In a Vehicle	2
On Foot	27
TOTAL	29

Alert Responsible for Resolution	
Yes	6
No	16
Unknown	7
Unresolved	0
TOTAL	29

Circumstances of Resolution	
Alive	29
Deceased	0
Unresolved	1
TOTAL	29

State Located	
New York	28
Washington	1
TOTAL	29

2022 Missing Vulnerable Adult Alert Activation Details

Circumstances	
Alzheimer's Disease/Dementia	114
Autism	7
Brain Disorder/TBI	6
Developmental Disability	3
Disoriented/Confused	13
Mental Illness/Schizophrenia	3
TOTAL	146

Method of Travel	
In a Vehicle	82
On Foot	64
TOTAL	146

Alert Responsible for Resolution	
Yes	51
No	87
Unknown	8
TOTAL	146

Circumstances of Resolution	
Alive	142
Deceased	4
Unresolved	0
TOTAL	146

State Located	
New York	137
Connecticut	2
Illinois	1
Massachusetts	1
New Jersey	1
Pennsylvania	3
Tennessee	1
TOTAL	146

Missing Person Clearinghouse Activity and Data

	2021	2022
Cases Referred to the Clearinghouse	1,588	1,815
Cases Publicized	524	618
Cases Closed	1,445	1,599
Cases Removed from Publication	518	609
Hotline Calls Received After Regular Business Hours	1,401	1,326
Birth/School Records Flagged	1,674	2,092
Birth/School Records Flag Removed	1,646	2,145

New York State Missing and Exploited Children Clearinghouse Fund

DCJS administers the New York State Missing and Exploited Children Clearinghouse Fund, which supports the Clearinghouse’s work to assist parents, law enforcement and others searching for missing and abducted children. Contributions are used to distribute educational materials, disseminate missing child alerts, supports preventative programs, and conduct investigative training for police officers.

A summary financial plan and projections of these funds is as follows:

Missing and Exploited Children Clearinghouse Fund Summary Financial Plan			
	2022–23	2023–24	2024–25
Revenue Received*	\$129,095	\$135,000	\$135,000
Interest Earned	\$1,271	\$1,000	\$1,000
Disbursements	\$124,073	\$150,000	\$150,000

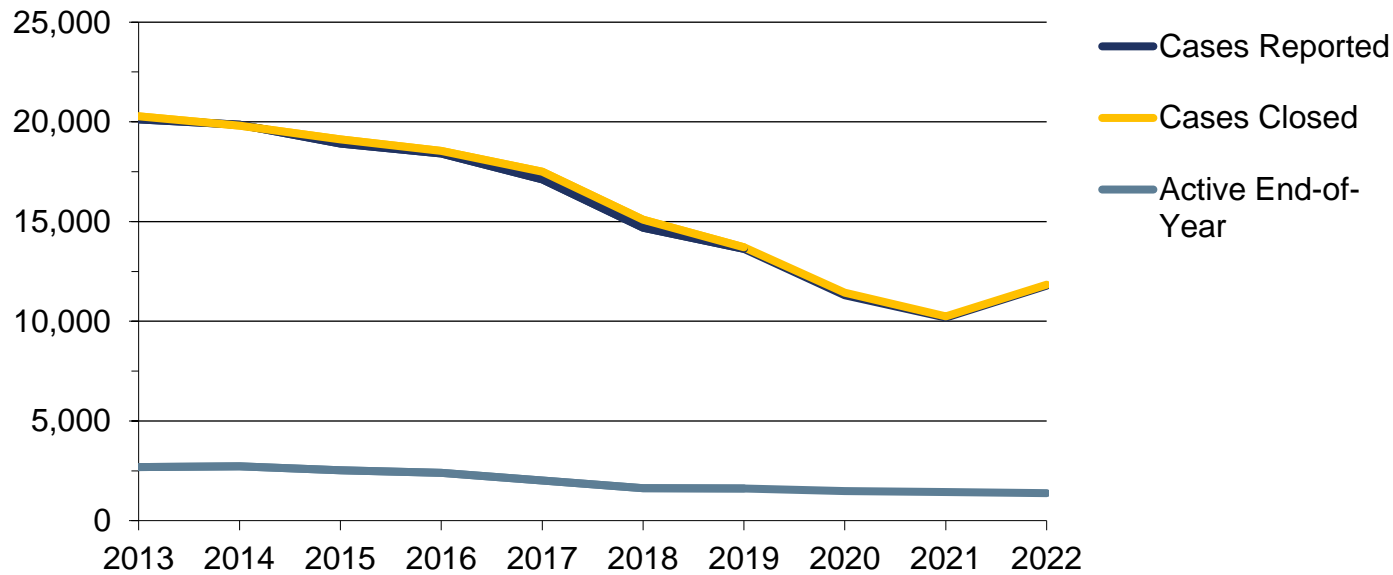
* Estimated revenue

Note: Disbursements in FY 2023–24 and 2024–25 are higher than estimated revenue received because any funds not spent in a given fiscal year are disbursed in subsequent years.

New Yorkers may donate to the Missing and Exploited Children Clearinghouse Fund when filing their state income tax returns or by sending donations directly to the Missing Persons Clearinghouse. All donations are tax deductible.

Visit the New York State Department of Taxation and Finance [website](#) or The [New York State Missing Persons Clearinghouse](#) for more information.

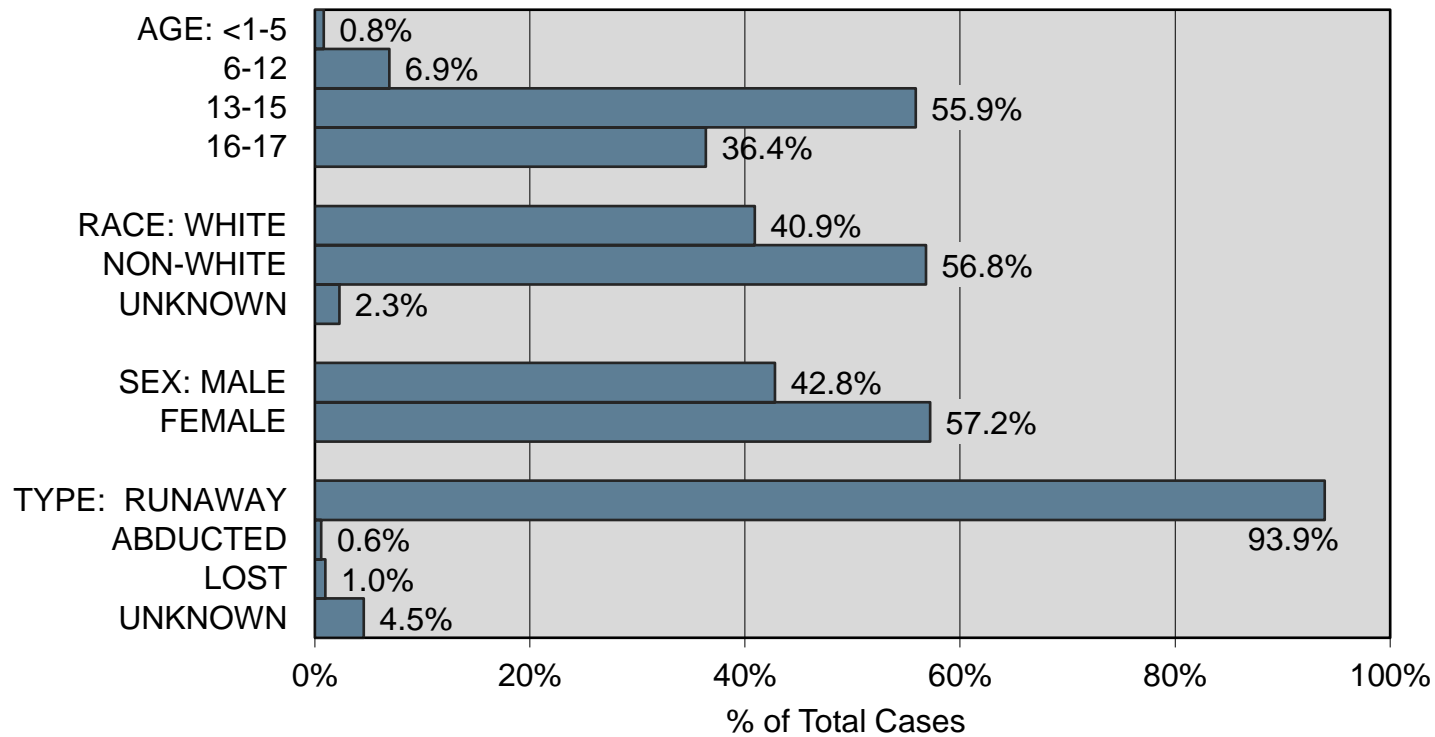
Annual Reporting Volume for Missing Children: 2013–2022



	2013	2014	2015	2016	2017	2018	2019	2020	2021	2022
NEW YORK STATE										
Cases Reported	20,124	19,860	18,916	18,417	17,114	14,697	13,632	11,307	10,184	11,784
Cases Closed	20,278	19,816	19,119	18,539	17,500	15,094	13,709	11,438	10,245	11,842
Active End-of-Year	2,680	2,724	2,521	2,401	2,017	1,625	1,614	1,490	1,430	1,378
NEW YORK CITY										
Cases Reported	8,003	7,975	7,022	6,551	5,870	5,315	4,611	3,817	3,625	4,066
Cases Closed	8,012	7,955	7,167	6,559	6,150	5,494	4,699	3,864	3,713	4,125
Active End-of-Year	1,175	1,195	1,050	1,043	763	585	544	503	416	357
NON-NEW YORK CITY										
Cases Reported	12,121	11,885	11,894	11,866	11,244	9,382	9,021	7,490	6,559	7,718
Cases Closed	12,266	11,861	11,952	11,980	11,350	9,600	9,010	7,574	6,532	7,717
Active End-of-Year	1,505	1,529	1,471	1,358	1,254	1,040	1,070	987	1,014	1,021

Note: Active End-of-Year includes reports from previous years.

2022 Characteristics of Cases Entered for Missing Children

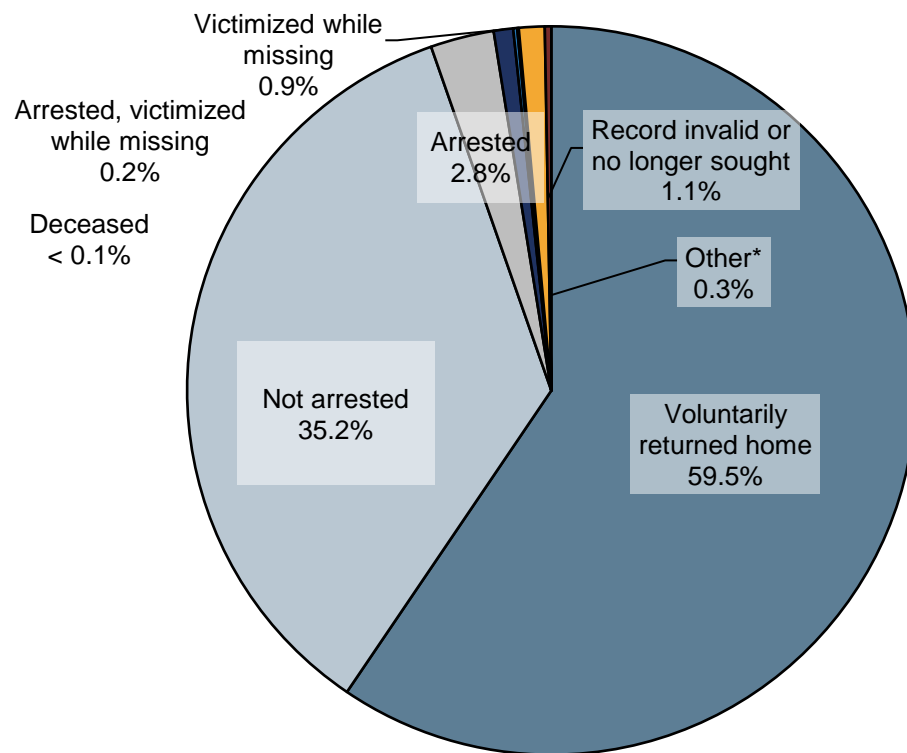


	TOTAL	AGE WHEN REPORTED MISSING				GENDER		RACE				
		< 1-5	6-12	13-15	16-17	Male	Female	White	Black	Asian	Indian	Unk.
Runaway	11,065	8	735	6,269	4,053	4,738	6,327	4,497	6,067	191	62	248
Familial Abduction	40	25	12	3	0	19	21	19	20	1	0	0
Abducted by Non-Cust. Parent	21	12	7	0	2	14	7	8	12	0	0	1
Acquaintance Abduction	6	2	0	2	2	1	5	2	3	1	0	0
Stranger Abduction	2	0	1	1	0	1	1	1	1	0	0	0
Lost	114	7	15	45	47	54	60	40	57	5	2	10
Unknown	536	43	47	264	182	215	321	253	251	14	9	9
TOTAL	11,784	97	817	6,584	4,286	5,042	6,742	4,820	6,411	212	73	268

Note: Abducted by Non-Custodial Parent is a new category that was instituted in June 2014. Prior to that date, that missing child circumstance was entered under the Familial Abduction category.

2022 Characteristics of Cases Closed for Missing Children

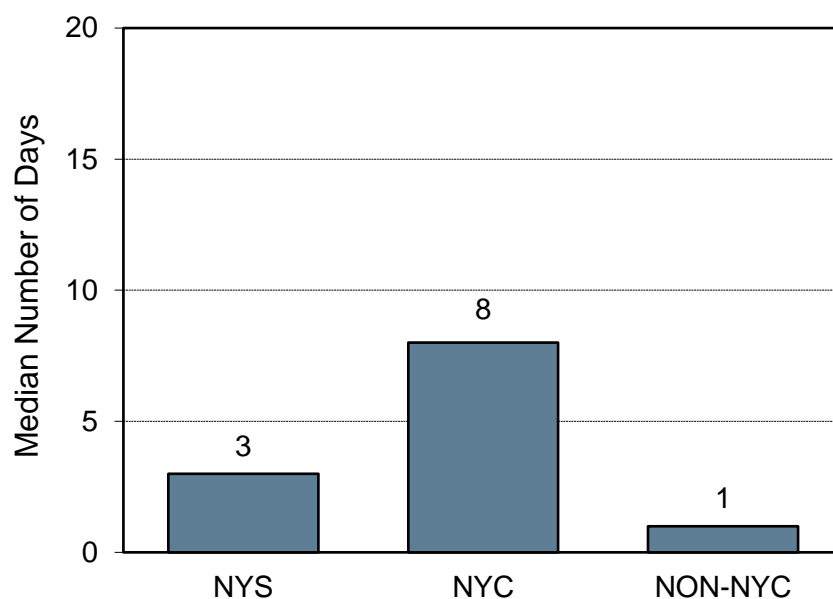
Circumstances of Recovery	TOTAL	AGE WHEN FOUND					GENDER		RACE				
		< 1-5	6-12	13-15	16-17	18+	Male	Female	White	Black	Asian	Indian	Unk.
Voluntarily returned home	7,044	11	423	3,878	2,649	83	3,002	4,042	2,764	3,942	126	41	171
Recovered, not arrested	4,164	59	322	2,237	1,430	116	1,701	2,463	1,808	2,166	81	29	80
Recovered, arrested	334	1	12	168	140	13	194	140	131	195	2	0	6
Recovered, victimized while missing	102	9	15	38	38	2	38	64	49	50	2	1	0
Recovered, arrested, victimized while missing	21	0	0	8	12	1	11	10	9	9	1	0	2
Recovered, deceased	8	0	0	0	5	3	6	2	3	4	0	1	0
Record invalid or no longer sought	135	5	8	61	52	9	70	65	56	73	2	0	4
Other*	34	0	3	2	13	16	16	18	18	9	3	1	3
TOTAL	11,842	85	783	6,392	4,339	243	5,038	6,804	4,838	6,448	217	73	266



Note*: "Other" is an authorized reporting category that can mean the reporting law enforcement agency either did not know the circumstances associated with the recovery of the child or did not use one of the more specific categories for reasons that are not known.

2022 Days between Case Entry and Cancellation for Missing Children

Median Days to Cancellation for Cases Closed During 2022



DAYS BETWEEN CASE ENTRY AND CANCELLATION FOR CASES CLOSED DURING 2021			
No. of Days	No. of Cases Closed	Percent Closed	Cumulative Percent Closed
< 1	2,325	19.6%	19.6%
1	2,127	18.0%	37.6%
2	913	7.7%	45.3%
3	626	5.3%	50.6%
4	521	4.4%	55.0%
5	402	3.4%	58.4%
6	349	2.9%	61.3%
7	304	2.6%	63.9%
8	236	2.0%	65.9%
9	210	1.8%	67.7%
10	183	1.5%	69.2%
11	160	1.4%	70.6%
12	153	1.3%	71.9%
13	124	1.0%	72.9%
14	125	1.1%	74.0%
15	105	0.9%	74.8%
16–29	882	7.4%	82.3%
30–60	773	6.5%	88.8%
61–90	441	3.7%	92.5%
91–120	282	2.4%	94.9%
121 or more	601	5.1%	100.0%
TOTAL	11,842	100.0%	100.0%

2022 Reporting Rate and Volume by County for Missing Children

	CASES REPORTED										CASES CLOSED									CASES ACTIVE
	Total	Rate ¹	Runaway	Abduction				Lost	Other	Total	Voluntarily returned home	Not arrested	Arrested	Victimized while missing	Arrested, victimized while missing	Deceased	Record invalid or no longer sought	Other	End-of-Year Active Cases	
				Familial	Non-Cust. Parent	Acquaint.	Stranger													
Albany	634	11.5	615	4	1	1	0	6	7	610	416	162	15	3	1	0	13	0	153	
Allegany	2	0.2	2	0	0	0	0	0	0	2	2	0	0	0	0	0	0	0	0	
Broome	200	5.5	182	0	0	1	0	6	11	196	141	50	2	1	0	0	2	0	18	
Cattaraugus	36	2.1	35	0	0	0	0	0	1	34	17	14	1	2	0	0	0	0	2	
Cayuga	26	1.8	23	0	0	0	0	0	3	26	9	17	0	0	0	0	0	0	0	
Chautauqua	71	2.8	69	1	0	0	0	1	0	72	42	28	0	1	1	0	0	0	1	
Chemung	75	4.3	73	0	0	0	0	1	1	73	47	23	2	0	0	0	1	0	5	
Chenango	5	0.5	5	0	0	0	0	0	0	5	5	0	0	0	0	0	0	0	0	
Clinton	15	1.1	14	0	0	0	0	0	1	15	7	7	1	0	0	0	0	0	1	
Columbia	9	0.9	9	0	0	0	0	0	0	9	2	7	0	0	0	0	0	0	0	
Cortland	12	1.3	8	1	0	0	0	0	3	12	4	8	0	0	0	0	0	0	0	
Delaware	2	0.3	1	0	0	0	0	0	1	2	0	2	0	0	0	0	0	0	2	
Dutchess	217	4.0	207	4	0	0	0	3	3	216	144	62	8	1	0	0	0	1	12	
Erie	726	3.9	649	11	4	3	0	14	45	725	363	278	34	12	4	1	24	9	301	
Essex	10	1.7	10	0	0	0	0	0	0	10	0	5	5	0	0	0	0	0	0	
Franklin	62	6.5	61	0	0	0	0	0	1	62	21	33	5	3	0	0	0	0	0	
Fulton	90	8.5	87	0	0	0	0	0	3	91	60	26	4	1	0	0	0	0	2	
Genesee	22	1.9	22	0	0	0	0	0	0	24	11	12	1	0	0	0	0	0	0	
Greene	6	0.8	6	0	0	0	0	0	0	6	3	2	1	0	0	0	0	0	1	
Hamilton	0	0.0	0	0	0	0	0	0	0	0	0	0	0	0	0	0	0	0	0	
Herkimer	43	3.5	42	0	0	0	0	0	1	45	19	18	7	0	0	0	0	1	0	
Jefferson	45	1.7	44	1	0	0	0	0	0	46	18	24	2	1	0	0	1	0	1	
Lewis	0	0.0	0	0	0	0	0	0	0	0	0	0	0	0	0	0	0	0	0	
Livingston	10	0.9	8	0	0	0	0	1	1	10	4	3	3	0	0	0	0	0	0	
Madison	18	1.4	18	0	0	0	0	0	0	18	9	9	0	0	0	0	0	0	0	
Monroe	888	5.9	871	0	3	0	0	1	13	904	455	404	35	4	0	0	6	0	45	
Montgomery	52	4.6	51	0	0	0	0	0	1	51	30	18	1	0	0	0	2	0	1	
Nassau	393	1.4	312	4	0	0	0	18	59	401	229	145	18	2	1	0	6	0	52	
New York City ²	4,066	2.4	3,947	8	6	0	0	8	97	4,125	2,653	1,332	65	28	4	4	39	0	357	
Niagara	206	5.0	179	1	2	1	0	2	21	209	114	80	5	6	0	0	3	1	19	
Oneida	320	6.6	304	0	1	0	0	10	5	326	175	123	24	3	0	0	1	0	6	

	CASES REPORTED									CASES CLOSED									CASES ACTIVE
	Total	Rate ¹	Runaway	Abduction				Lost	Other	Total	Voluntarily returned home	Not arrested	Arrested	Victimized while missing	Arrested, victimized while missing	Deceased	Record invalid or no longer sought	Other	End-of-Year Active Cases
				Familial	Non-Cust. Parent	Acquaint.	Stranger												
Onondaga	362	3.7	304	2	0	0	0	3	53	355	136	202	7	5	1	0	4	0	21
Ontario	36	1.7	34	0	0	0	0	1	1	33	20	11	2	0	0	0	0	0	3
Orange	239	2.4	226	1	0	0	1	4	7	251	132	107	6	1	0	1	1	3	20
Orleans	21	2.8	21	0	0	0	0	0	0	19	12	7	0	0	0	0	0	0	2
Oswego	59	2.4	54	0	0	0	0	0	5	61	22	34	1	1	1	0	2	0	0
Otsego	3	0.3	2	0	0	0	0	1	0	3	0	2	1	0	0	0	0	0	0
Putnam	7	0.4	7	0	0	0	0	0	0	7	3	4	0	0	0	0	0	0	3
Rensselaer	124	4.1	110	0	0	0	0	3	11	125	64	54	5	2	0	0	0	0	27
Rockland	166	1.8	147	0	0	0	0	6	13	157	109	45	3	0	0	0	0	0	34
Saint Lawrence	56	2.6	53	0	0	0	0	1	2	57	20	28	6	1	0	0	2	0	0
Saratoga	67	1.5	63	1	0	0	0	1	2	66	24	40	2	0	0	0	0	0	5
Schenectady	219	6.5	211	0	0	0	1	2	5	200	118	67	8	4	3	0	0	0	23
Schoharie	6	1.1	4	0	0	0	0	0	2	6	1	1	1	2	0	0	1	0	0
Schuyler	1	0.3	1	0	0	0	0	0	0	1	0	1	0	0	0	0	0	0	0
Seneca	3	0.4	3	0	0	0	0	0	0	3	2	1	0	0	0	0	0	0	0
Steuben	45	2.2	37	0	0	0	0	1	7	45	26	16	1	2	0	0	0	0	0
Suffolk	716	2.3	594	0	1	0	0	2	119	705	419	252	17	1	3	1	10	2	61
Sullivan	27	1.7	24	0	0	0	0	1	2	27	12	9	2	2	0	0	0	2	10
Tioga	35	3.6	34	0	0	0	0	0	1	38	12	22	2	0	0	0	2	0	1
Tompkins	24	1.6	24	0	0	0	0	0	0	24	11	11	1	1	0	0	0	0	1
Ulster	110	3.6	99	0	0	0	0	7	4	110	67	38	2	2	0	0	0	1	9
Warren	57	5.0	55	0	0	0	0	0	2	57	30	24	1	2	0	0	0	0	4
Washington	153	13.7	152	0	0	0	0	1	0	156	90	59	2	1	0	0	4	0	1
Wayne	20	1.1	20	0	0	0	0	0	0	22	9	12	1	0	0	0	0	0	1
Westchester	940	4.5	906	1	3	0	0	9	21	965	697	213	21	7	2	1	10	14	169
Wyoming	4	0.5	4	0	0	0	0	0	0	3	0	3	0	0	0	0	0	0	1
Yates	2	0.4	2	0	0	0	0	0	0	2	1	1	0	0	0	0	0	0	0
Out of State	2		2	0	0	0	0	0	0	2	0	2	0	0	0	0	0	0	0
New York State	11,765	2.9	11,047	40	21	6	2	114	535	11,825	7,037	4,158	331	102	21	8	134	34	1,375

¹ Rate per 1,000 children.

² Includes the counties of Bronx, Kings, New York, Queens and Richmond. Also includes cases entered by the Port Authority of New York and New Jersey.

2022 Number of Entries per Child

NUMBER OF ENTRIES PER CHILD FOR CASES ENTERED DURING 2022		
No. of Times a Child was Entered	No. of Children	Total Entries
1	5,925	5,925
2	883	1,766
3	315	945
4	152	608
5	119	595
6	56	336
7	36	252
8	30	240
9	15	135
10	12	120
11	8	88
12	9	108
13	7	91
14	3	42
15	5	75
17	3	51
18	2	36
19	1	19
20	1	20
21	1	21
24	1	24
25	2	50
26	1	26
28	2	56
30	3	90
31	1	31
34	1	34
TOTAL	7,594	11,784

2022 Reporting Volume by County for Missing Vulnerable Adults

	CASES REPORTED																	CASES CLOSED	END-OF-YEAR
	AGE											GENDER		RACE					
	Total	18-19	20-29	30-39	40-49	50-59	60-69	70-79	80-89	90-99	Unk	Male	Female	White	Black	Other	Unk.		
Albany	59	7	14	18	7	6	3	2	1	1	30	29	35	20	2	2	59	14	59
Allegany	1	0	0	0	0	0	0	0	1	0	1	0	1	0	0	0	1	0	1
Broome	17	1	1	2	4	3	1	2	3	0	8	10	16	2	0	0	15	7	17
Cattaraugus	6	2	2	0	0	0	1	0	1	0	3	3	5	0	1	0	7	1	6
Cayuga	3	0	0	1	0	1	0	1	0	0	3	0	2	1	0	0	3	0	3
Chautauqua	7	0	1	2	1	0	3	0	0	0	5	2	7	0	0	0	6	3	7
Chemung	4	0	0	1	0	0	1	1	1	0	3	1	3	1	0	0	4	1	4
Chenango	2	0	0	0	0	1	0	1	0	0	2	0	2	0	0	0	2	0	2
Clinton	7	0	2	1	1	1	1	0	1	0	4	3	7	0	0	0	7	0	7
Columbia	7	0	2	0	1	1	1	1	1	0	7	0	6	1	0	0	7	0	7
Cortland	7	0	1	2	1	1	0	2	0	0	2	5	7	0	0	0	7	0	7
Delaware	3	0	0	2	0	0	0	1	0	0	2	1	3	0	0	0	3	1	3
Dutchess	41	9	9	2	1	4	8	2	6	0	19	22	22	19	0	0	36	7	41
Erie	97	3	17	18	13	16	14	12	3	1	62	35	52	43	2	0	101	33	97
Essex	1	0	0	0	0	0	0	0	0	1	0	1	1	0	0	0	1	1	1
Franklin	2	0	0	1	0	0	1	0	0	0	2	0	2	0	0	0	1	2	2
Fulton	7	1	0	4	1	0	0	0	1	0	4	3	6	1	0	0	7	0	7
Genesee	8	0	4	0	0	2	0	1	0	1	6	2	5	1	2	0	8	0	8
Greene	4	0	0	0	1	0	0	1	2	0	4	0	4	0	0	0	5	0	4
Hamilton	0	0	0	0	0	0	0	0	0	0	0	0	0	0	0	0	0	0	0
Herkimer	3	1	1	0	0	0	0	0	1	0	2	1	3	0	0	0	3	0	3
Jefferson	0	0	0	0	0	0	0	0	0	0	0	0	0	0	0	0	0	1	0
Lewis	1	0	0	0	0	0	0	1	0	0	1	0	1	0	0	0	1	0	1
Livingston	10	0	2	3	2	0	0	2	1	0	9	1	10	0	0	0	9	1	10
Madison	6	0	1	0	0	1	1	3	0	0	5	1	6	0	0	0	6	0	6
Monroe	78	5	18	8	6	10	7	12	10	2	48	30	49	27	1	1	76	6	78
Montgomery	14	0	5	1	4	1	1	1	1	0	10	4	10	4	0	0	13	1	14
Nassau	223	10	37	47	26	58	17	12	14	2	132	91	113	92	14	4	220	10	223
New York City ¹	719	3	7	7	10	26	215	290	148	13	454	266	276	336	102	6	725	33	719
Niagara	13	1	4	0	1	1	2	2	2	0	8	5	11	1	0	1	12	3	13
Oneida	49	1	12	14	6	7	5	2	2	0	37	13	38	12	0	0	53	4	49

	CASES REPORTED																	CASES CLOSED	END-OF-YEAR
	AGE											GENDER		RACE					
	Total	18-19	20-29	30-39	40-49	50-59	60-69	70-79	80-89	90-99	Unk	Male	Female	White	Black	Other	Unk.		
Onondaga	39	2	8	6	6	4	4	4	5	0	30	9	21	17	1	0	39	5	39
Ontario	16	2	4	3	1	1	1	2	1	1	8	8	14	2	0	0	15	1	16
Orange	57	5	11	11	5	9	4	7	4	1	33	24	38	16	2	1	57	2	57
Orleans	4	0	0	0	0	1	0	2	1	0	4	0	3	1	0	0	4	0	4
Oswego	4	0	1	0	0	2	0	1	0	0	3	1	4	0	0	0	3	2	4
Otsego	4	1	0	0	0	1	0	1	1	0	4	0	4	0	0	0	3	1	4
Putnam	5	1	0	2	0	1	0	1	0	0	5	0	2	2	0	1	6	0	5
Rensselaer	35	5	8	8	4	2	5	2	1	0	19	16	28	7	0	0	32	14	35
Rockland	55	5	14	2	9	8	9	1	7	0	39	16	26	25	3	1	56	9	55
Saint Lawrence	6	0	1	1	1	2	0	0	1	0	5	1	6	0	0	0	6	0	6
Saratoga	47	0	12	9	7	5	7	3	4	0	26	21	42	4	1	0	46	1	47
Schenectady	37	2	4	6	4	8	5	6	2	0	32	5	25	11	1	0	38	4	37
Schoharie	1	0	0	0	0	0	0	1	0	0	0	1	1	0	0	0	1	0	1
Schuyler	1	0	0	0	0	0	0	1	0	0	1	0	1	0	0	0	1	0	1
Seneca	3	0	0	2	1	0	0	0	0	0	0	3	3	0	0	0	2	1	3
Steuben	7	0	2	2	1	0	0	1	1	0	4	3	7	0	0	0	7	0	7
Suffolk	61	2	8	14	4	2	9	14	8	0	42	19	44	16	1	0	60	4	61
Sullivan	11	0	0	1	1	6	2	0	1	0	7	4	9	2	0	0	11	1	11
Tioga	0	0	0	0	0	0	0	0	0	0	0	0	0	0	0	0	0	1	0
Tompkins	7	0	2	2	0	0	1	1	1	0	5	2	5	1	1	0	7	0	7
Ulster	24	1	6	4	4	1	2	4	2	0	13	11	18	6	0	0	23	1	24
Warren	16	3	3	1	4	1	1	2	1	0	9	7	15	1	0	0	16	0	16
Washington	4	0	0	2	2	0	0	0	0	0	1	3	4	0	0	0	4	1	4
Wayne	9	1	2	1	1	0	2	2	0	0	6	3	7	2	0	0	9	0	9
Westchester	140	22	26	21	12	21	22	8	8	0	75	65	65	69	3	3	145	26	140
Wyoming	4	0	0	1	1	0	1	1	0	0	4	0	4	0	0	0	3	2	4
Yates	1	0	0	0	0	0	0	1	0	0	1	0	1	0	0	0	1	0	1
Out of State	6	0	3	2	0	0	0	1	0	0	5	1	2	4	0	0	5	1	6
New York State	2,003	96	255	235	154	215	357	419	249	23	1,254	752	1,102	747	137	20	1,998	206	2,003

¹ Includes the counties of Bronx, Kings, New York, Queens and Richmond. Also includes cases entered by the Port Authority of New York and New Jersey.

2022 Days between Case Entry and Cancellation for Missing Vulnerable Adult Cases

DAYS BETWEEN CASE ENTRY AND CANCELLATION FOR CASES CLOSED DURING 2022			
No. of Days	No. of Cases Closed	Percent Closed	Cumulative Percent Closed
< 1	468	23.4%	23.4%
1	343	17.1%	40.5%
2	180	9.0%	49.5%
3	148	7.4%	56.9%
4	106	5.3%	62.2%
5	119	5.9%	68.1%
6	74	3.7%	71.8%
7	45	2.2%	74.1%
8	43	2.1%	76.2%
9	34	1.7%	77.9%
10	35	1.7%	79.7%
11	21	1.0%	80.7%
12	16	0.8%	81.5%
13	18	0.9%	82.4%
14	13	0.6%	83.1%
15	15	0.7%	83.8%
16–29	118	5.9%	89.7%
30–60	63	3.1%	92.9%
61–90	29	1.4%	94.3%
91–120	34	1.7%	96.0%
121 or more	80	4.0%	100.0%
TOTAL	2,002	100.0%	100.0%

2022 Number of Entries per Adult

NUMBER OF ENTRIES PER ADULT FOR CASES ENTERED DURING 2022		
No. of Times an Adult was Entered	No. of Adults	Total Entries
1	5,928	5,928
2	309	618
3	72	216
4	27	108
5	15	75
6	8	48
7	9	63
8	4	32
9	3	27
10	4	40
11	2	22
13	1	13
14	2	28
17	1	17
18	1	18
25	1	25
46	1	46
TOTAL	6,388	7,324